



Application Description:

MarketView Mobile™ provides real time streaming prices from various Indian and leading International exchanges on your Windows Mobile. In addition to this, the application provides OTC data, News and other contents real time.


Some of the features include Real-time Market depth, Charts, Alerts, Market statistics, multiple profile creation, Portfolio manager, Mutual funds, Insurance, IPO etc.

The application is most user friendly with an intuitive GUI. The application requires Advanced GPRS connection to enable real-time streaming quotes.

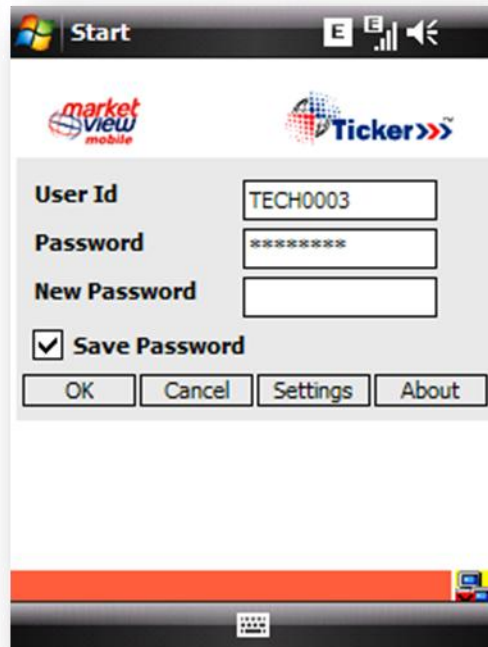
The Modalities:

MarketView Mobile™ application for the Windows mobile handsets can be downloaded from the download link available on MarketView Mobile™ website. On its download you need to contact our support team at support@tickerplantindia.com or call at +91-22-66866060. Our relationship manager will get in touch with you and will explain you about the exchanges covered and also about the costing for exchange feeds and OTC market data. Information about the various payment options would be discussed by RM. Once the payment is credited the User Id and Password will be generated and provided to you. By using this User Id and Password, you can login to the MarketView Mobile™ application and start using it. **Kindly check the list of supported devices on MarketView Mobile™ website.**

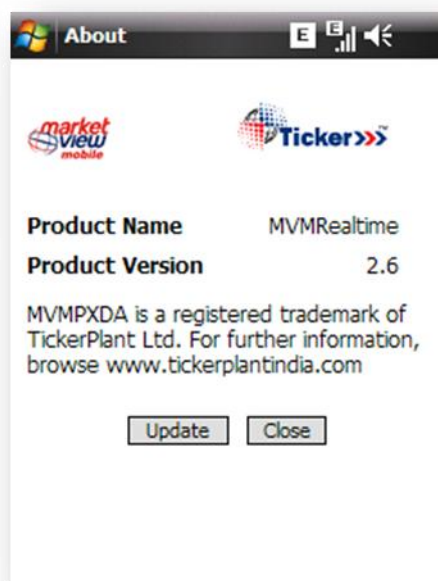
Market View Mobile™

Click on the application Icon  that will appear on the programs page of your Windows Mobile screen and user will be able to see the default Login Screen as shown.

Login Screen



- The OK button will make the user to successfully LOGIN.
- The Cancel button will close the application.
- The About button on the right corner will navigate you to the About-details of the product and version update option.
- The Settings button will show application setting and Market Watch orientation selection screen.



MarketView Mobile™ is a product of TickerPlant Limited

Market Watch

- When the user 1st time logs in he will be provided with default profiles depending on his privilege.
- In Market Watch screen user will be able to see Indexes based on the privileges and records of his default profile.
- If the profile contains more than 5 records than other records will be shown on other page. User can navigate through pages with the Page dropdown box.
- Use can switch between profiles using profiles dropdown box.

BO	BP	SP	SO	LTP
MCX COMDEX 2586.44(+4.81)				
SENSEX 16384.41(-135.27)				
NIFTY 4910.70(-36.90)				
FUTEX AGRI 2983.91(0.00)				
B FINTECH A 12:18:17				
50	1297.00	1302.95	140	1300.00
N FINANTECH EQ 12:18:15				
1	1298.00	1299.95	17	1300.00
M GOLD 05JUN2010 12:18:12				
1	17950.00	17951.00	3	17950.00
M USDINR 27MAY2010 12:18:16				
47	46.8350	46.8375	130	46.8350
M EURINR 26MAY2010 12:18:15				
75	58.8150	58.8275	50	58.8150

View Graph Best 5 Alert

Profile IND Pg 1 / 1 1

MVMP

View Details of scrip and Set Alert of particular scrip

Start [E] [Signal] [Back]

Scrip Details

M GOLD 05JUN2010

Buy Price 17954.00
 Sell Price 17959.00
 Buy Qty 4
 Sell Qty 5
 LTP 17954.00
 LUT 12:04:28
 Vol 11554
 Open 18136.00
 High 18136.00
 Low 17953.00
 Close 18158.00
 Open Int. 12522

Set/Modify Alert [E] [Signal] [Back]

Alert for
M GOLD 05JUN2010

Alert Type

Direction

Price

MVMP [Signal] [Back]

Graph and Market Depth- Best Five Details



Best Five Details [E] [Signal] [Back]

M GOLD 05JUN2010

BQ	BP	SP	SQ
3	17945.00	17950.00	13
1	17944.00	17951.00	10
3	17943.00	17952.00	4
4	17942.00	17953.00	2
2	17941.00	17954.00	3

LTP 17949.00 **Vol** 11821
Net Chg -209.00 **% Chg** -1.15
Open 18136.00 **High** 18136.00
Low 17944.00 **Close** 18158.00
O I 12556 **LUT** 12:05:31
TBQ 904 **TSQ** 1098
ATP 18003.49 **Val(Cr.)**

Profile Screen

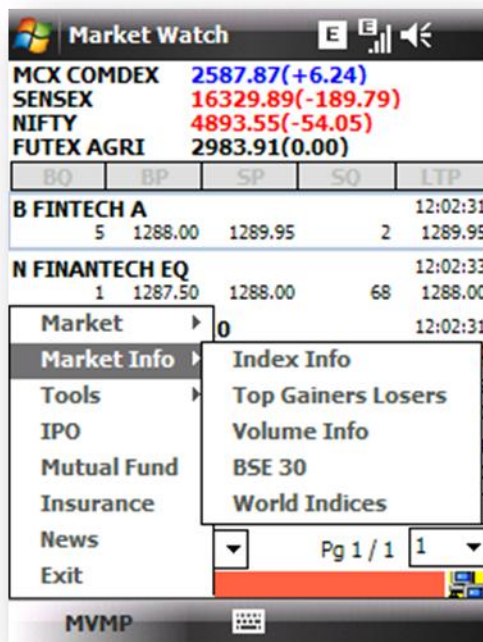
Profiles can be switched using dropdown box.

- New Profile can be created from this screen using 'New' button. Tapping this button will take user to symbol lookup page and from there scrip can be added.
- Up, Down buttons are for changing the order of scrip in a profile. This will change the order for the session. If User wants to keep the new order then save changes. Tap Save button to save changes permanently.
- User can set a profile as default profile from this screen by tapping Default button.
- User can Delete a profile from this screen.
- User can add/ remove scrips from a particular profile from this screen.
- User can set an alert from this screen.

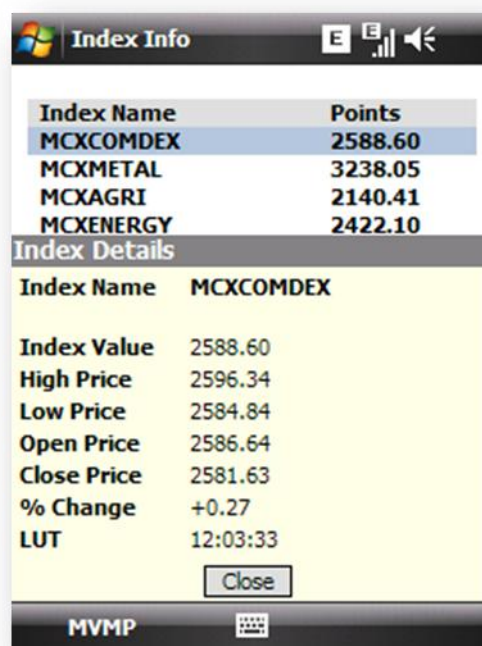
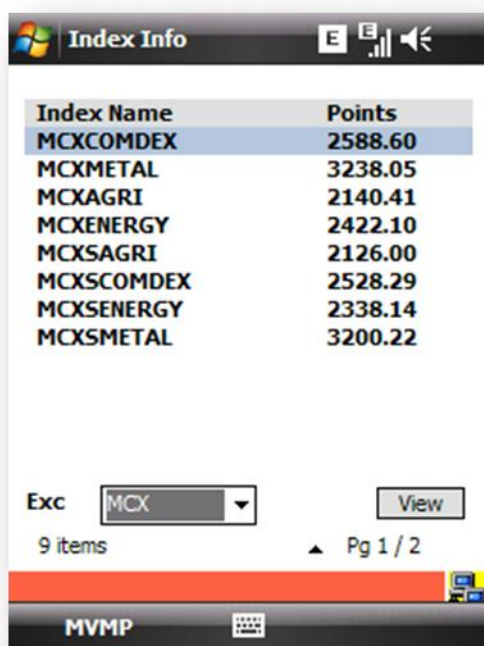


Market Info:

User can navigate to: Index Info, Market: Top Gainers, Losers and Volume: Toppers, Crashers and shockers, BSE30 and World Indices.

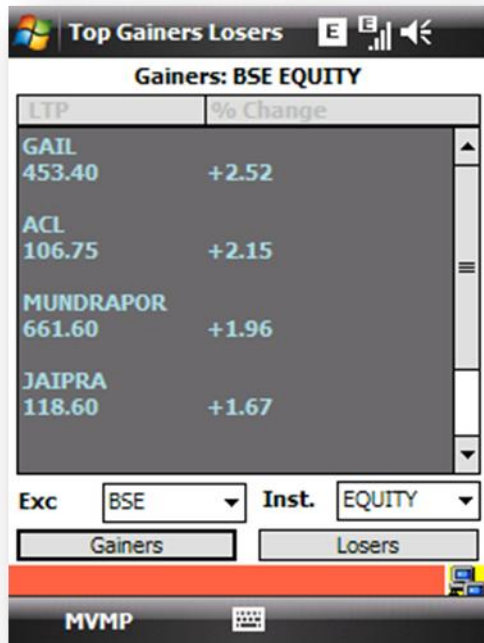


Index Info



Top Gainers Losers

Shows Market Top Gainers and Losers.

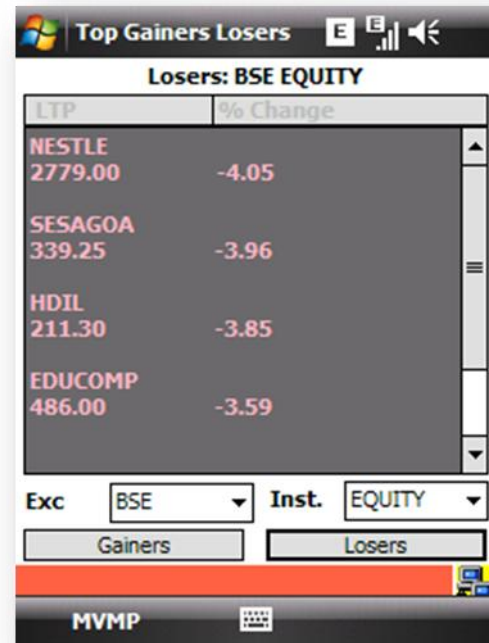


LTP	% Change
GAIL 453.40	+2.52
ACL 106.75	+2.15
MUNDRAPOR 661.60	+1.96
JAIPRA 118.60	+1.67

Exc: BSE Inst. EQUITY

Gainers Losers

MVMP



LTP	% Change
NESTLE 2779.00	-4.05
SESAGOA 339.25	-3.96
HDIL 211.30	-3.85
EDUCOMP 486.00	-3.59

Exc: BSE Inst. EQUITY

Gainers Losers

MVMP

Volume Info

Volume- Toppers, Shockers and Crashers

Volume Info

Toppers: MCX FUTCOM

LTP	Volume (Lks)
COPPER 30Jun2010	311.50 0.19
GOLDM 05Jun2010	17968.00 0.17
CRUDEOIL 21Jun2010	3317.00 0.14
GOLD 05Jun2010	17951.00 0.12

Exc MCX Inst. FUTCOM

Toppers Crashers Shockers

MVMP

Volume Info

Crashers: MCX FUTCOM

LTP	Volume (Lks)
COPPER 30Jun2010	311.50 0.19
GOLDM 05Jun2010	17968.00 0.17
CRUDEOIL 21Jun2010	3317.00 0.14
GOLD 05Jun2010	17951.00 0.12

Exc MCX Inst. FUTCOM

Toppers Crashers Shockers

MVMP

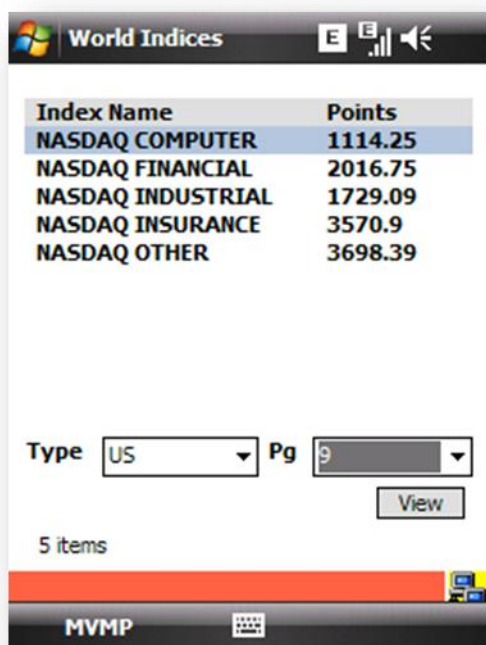
BSE 30

BSE 30

LTP	% Change
ACC	850.95 +0.72
BHARTIARTL	262.55 +0.92
BHEL	2283.00 -0.65
DLF	265.35 -2.10
GRASIM	2484.00 -1.17

MVMP

World Indices



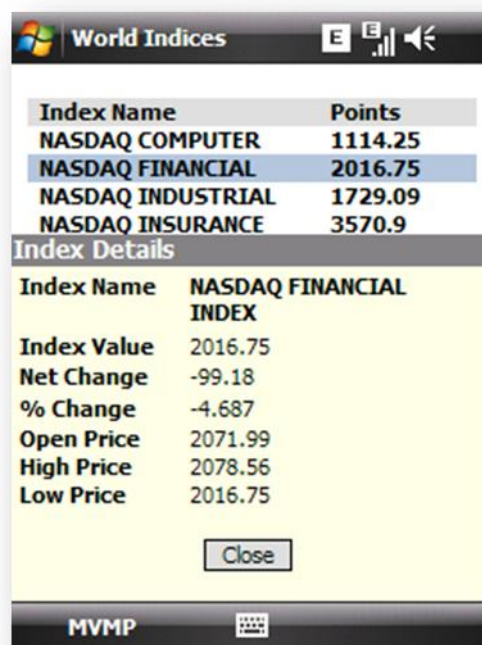
The screenshot shows the 'World Indices' app interface. At the top, there's a title bar with the Windows logo, the text 'World Indices', and icons for a menu, signal strength, and volume. Below the title bar is a table with two columns: 'Index Name' and 'Points'. The table lists five NASDAQ indices: NASDAQ COMPUTER (1114.25), NASDAQ FINANCIAL (2016.75), NASDAQ INDUSTRIAL (1729.09), NASDAQ INSURANCE (3570.9), and NASDAQ OTHER (3698.39). Below the table, there are two dropdown menus: 'Type' set to 'US' and 'Pg' set to '9'. A 'View' button is located to the right of the 'Pg' dropdown. Below these elements, it says '5 items'. At the bottom, there's a red bar with the text 'MVMP' and a small logo.

Index Name	Points
NASDAQ COMPUTER	1114.25
NASDAQ FINANCIAL	2016.75
NASDAQ INDUSTRIAL	1729.09
NASDAQ INSURANCE	3570.9
NASDAQ OTHER	3698.39

Type: Pg:

5 items

MVMP



The screenshot shows the 'World Indices' app interface with the 'Index Details' screen. The title bar is the same as the previous screenshot. Below the title bar, there's a table with two columns: 'Index Name' and 'Points'. The table lists five NASDAQ indices: NASDAQ COMPUTER (1114.25), NASDAQ FINANCIAL (2016.75), NASDAQ INDUSTRIAL (1729.09), NASDAQ INSURANCE (3570.9), and NASDAQ OTHER (3698.39). Below the table, there's a section titled 'Index Details' with a yellow background. It contains the following information: Index Name: NASDAQ FINANCIAL INDEX, Index Value: 2016.75, Net Change: -99.18, % Change: -4.687, Open Price: 2071.99, High Price: 2078.56, and Low Price: 2016.75. A 'Close' button is located at the bottom right of the yellow section. At the bottom, there's a red bar with the text 'MVMP' and a small logo.

Index Name	Points
NASDAQ COMPUTER	1114.25
NASDAQ FINANCIAL	2016.75
NASDAQ INDUSTRIAL	1729.09
NASDAQ INSURANCE	3570.9
NASDAQ OTHER	3698.39

Index Details

Index Name	NASDAQ FINANCIAL INDEX
Index Value	2016.75
Net Change	-99.18
% Change	-4.687
Open Price	2071.99
High Price	2078.56
Low Price	2016.75

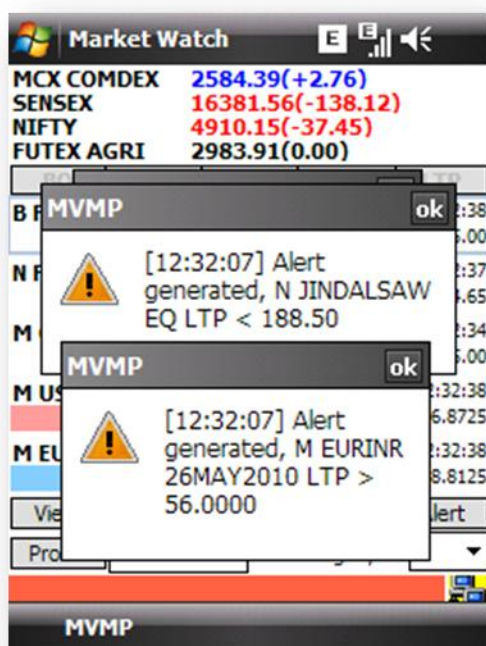
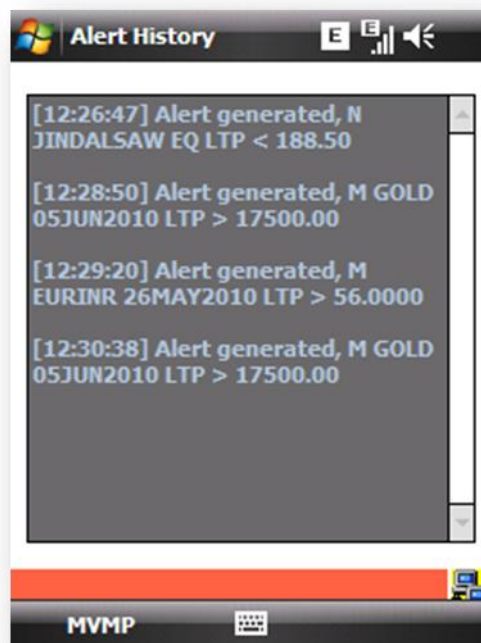
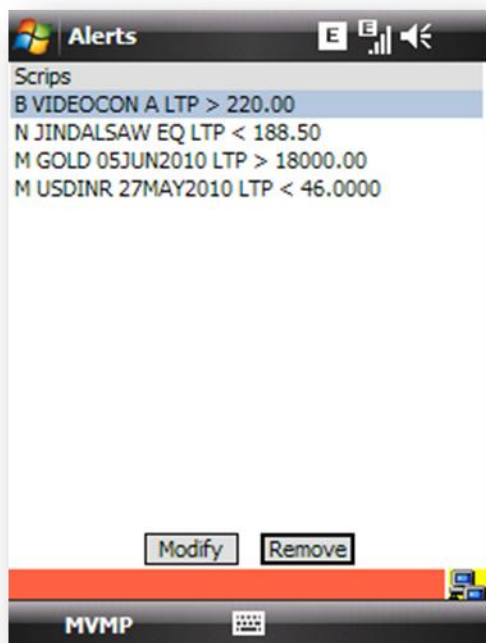
MVMP

Tools

Market tools like Parity Calculators, Alerts and Portfolio Mgmt System.

Market Watch				
MCX COMDEX		2587.79(+6.16)		
SENSEX		16329.55(-190.13)		
NIFTY		4893.10(-54.50)		
FUTEX AGRI		2983.91(0.00)		
BQ	BP	SP	SQ	LTP
B FINTECH A				
5	1288.00	1289.90	2	1289.95
N FINANTECH EQ				
1	1287.50	1288.00	68	1288.00
Market				
Market Info				
Tools				
Alerts				
Alerts History				
Parity Calc				
PMS				
Alert				
Pg 1 / 1				
MVMP				

Alerts



Parity Calc

The Parity Calc application interface shows a form for calculating parity. It includes dropdown menus for Symbol (GOLD), Base Contract (CMX 26MAY2010), Future Contract (M GOLD 05JUN2010), and (Rs.) (USDINRCOMP). There are input fields for CIF(\$), Cust Duty(Rs.), Bank Cost (%), and Fineness. A 'Go to Parity Watch' button is located below the input fields. At the bottom, there are buttons for Edit, Add, Restore, Clear, and Close. The MVMP logo is visible at the very bottom.

Symbol	GOLD
Base Contract	CMX 26MAY2010
Future Contract	M GOLD 05JUN2010
(Rs.)	USDINRCOMP
CIF(\$)	1.00
Cust Duty(Rs.)	20600.00
Bank Cost (%)	0.10
Fineness	995

Go to Parity Watch

Edit Add Restore Clear Close

MVMP

Portfolio

The Portfolio application interface displays a table of holdings. The net P/L is shown as -17900.00. The table has columns for Name, Qty, and PPR. Below the table, it indicates 'Scripts in Portfolio: 4' and provides buttons for Add, Modify, Remove, and Close. The MVMP logo is visible at the bottom.

Name	Qty	PPR
B INDAGEVI...	35	42.4
B INDIAINFO A	155	150
B RCOM A	50	300
B STERLITEI...	25	690

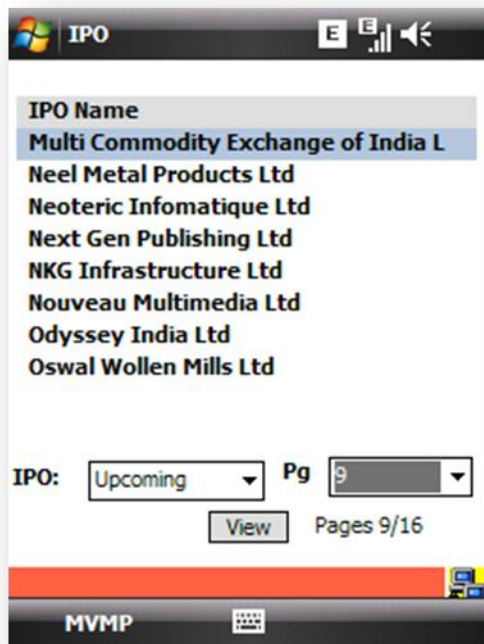
Net (P/L): -17900.00

Scripts in Portfolio: 4

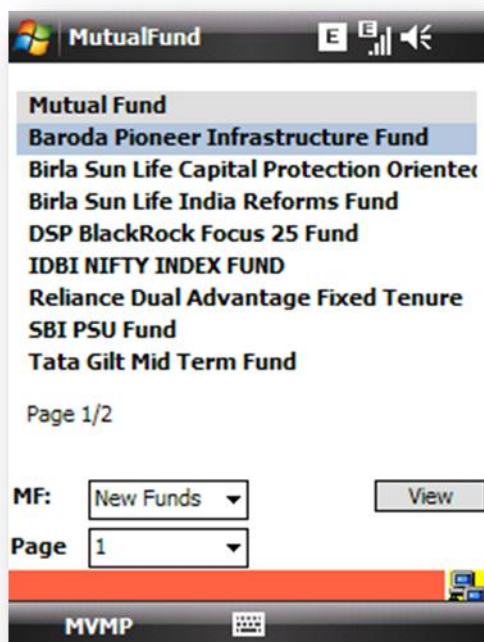
Add Modify Remove Close

MVMP

IPO



Mutual Fund



Insurance

Insurance

- LIC BIMA Plus - Balanced Fund
- LIC BIMA Plus - Risk Fund
- LIC BIMA Plus - Secured Fund
- LIC Child Fortune Plus - Balanced Fund
- LIC Child Fortune Plus - Bond Fund
- LIC Child Fortune Plus - Growth Fund
- LIC Child Fortune Plus - Secured Fund
- LIC Fortune Plus - Balanced Fund

Pages 1/7

Name

Plan

Page

MVMP

Insurance

- LIC BIMA Plus - Balanced Fund
- LIC BIMA Plus - Risk Fund
- LIC BIMA Plus - Secured Fund
- LIC Child Fortune Plus - Balanced Fund

Insurance Details

Policy Name	LIC BIMA Plus - Balanced Fund
Policy Plan	BimaPlus
Fund Name	Balance Fund
Current NAV	37.7900
Date	18-May-2010

MVMP

News

News

- [12:03] TNS *RBI dy Chakrabarty: We are in uncertain times
- [11:57] TNS *Century Textiles: To restore viscose yarn ops at appropriate time
- [11:56] TNS *Century Textiles: Rayon yarn, chemicals ops remain unaffected
- [11:55] TNS *Century Textiles: Suspends viscose yarn ops on adverse mkt condition
- [11:54] TNS *Century Textiles: Tyre

MVMP

Exit

Logoff and end session

